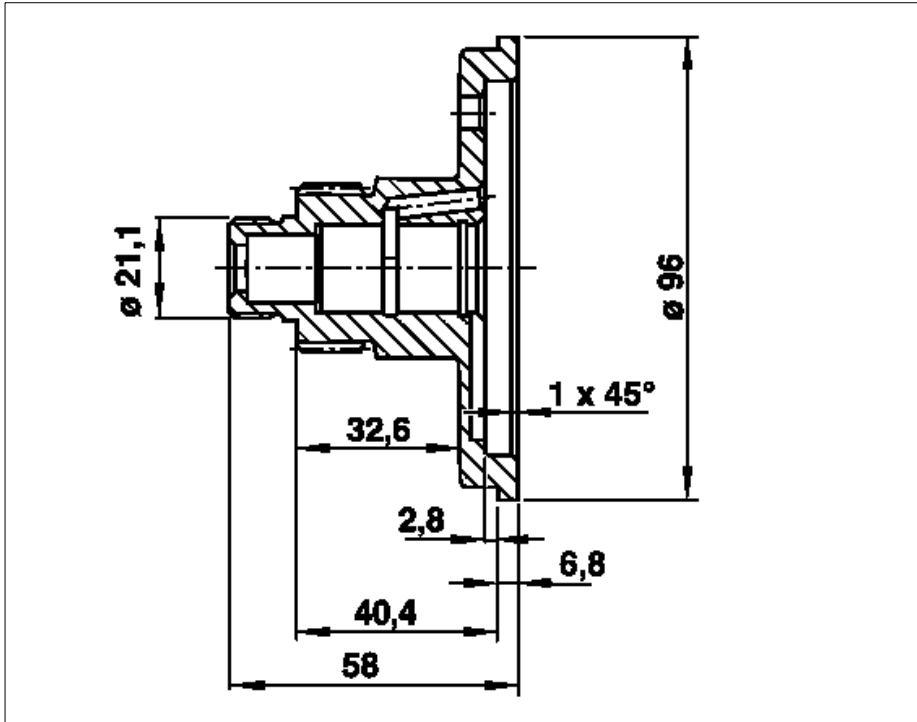
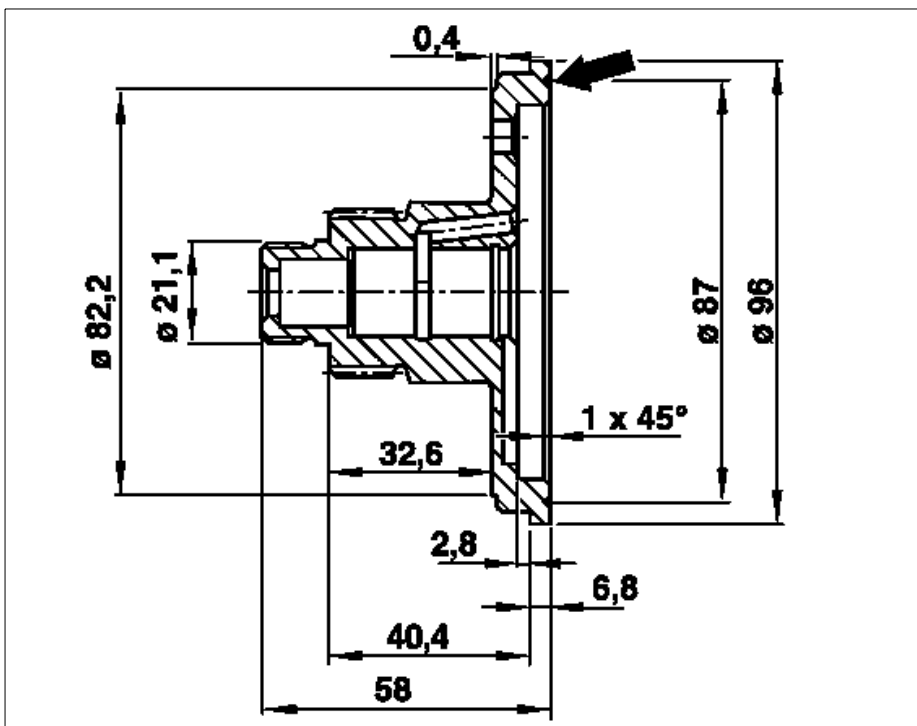


## Flanschswelle



P05.20-0251-35

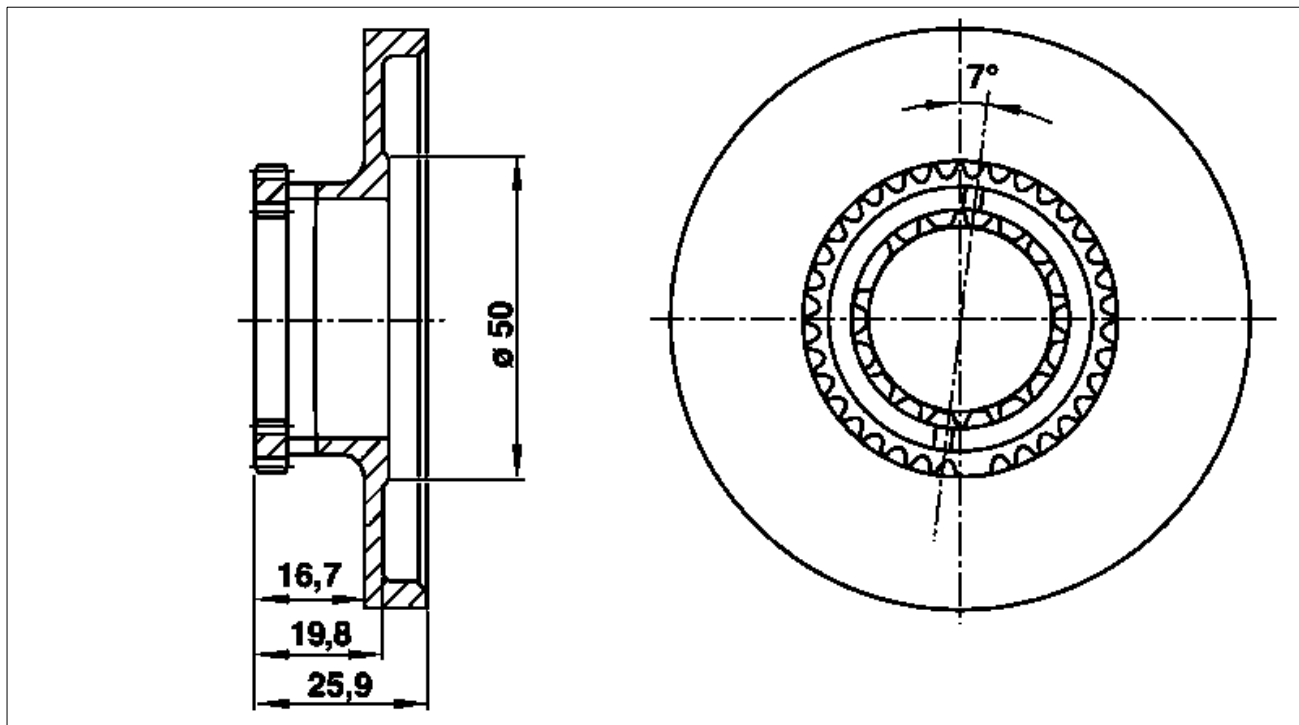
Flanschswelle 104 051 03 84



P05.20-0252-35

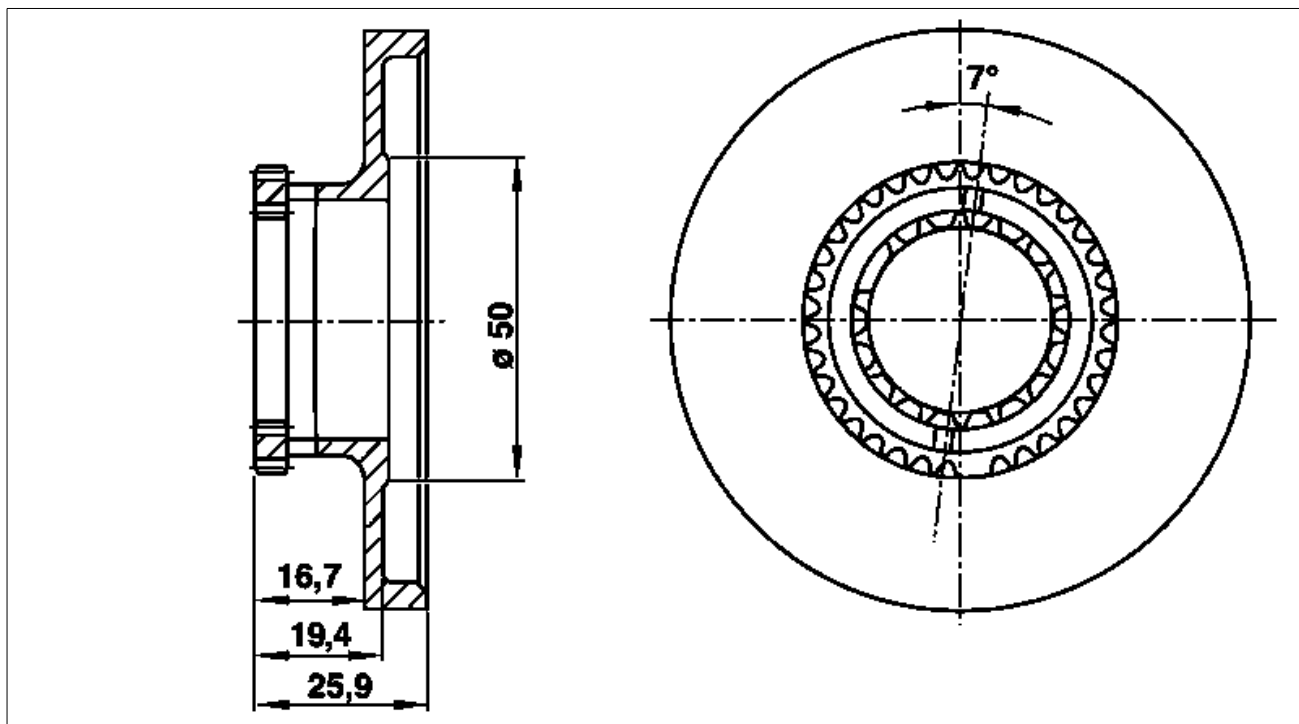
Flanschswelle 104 051 04 84

# Stellkolben



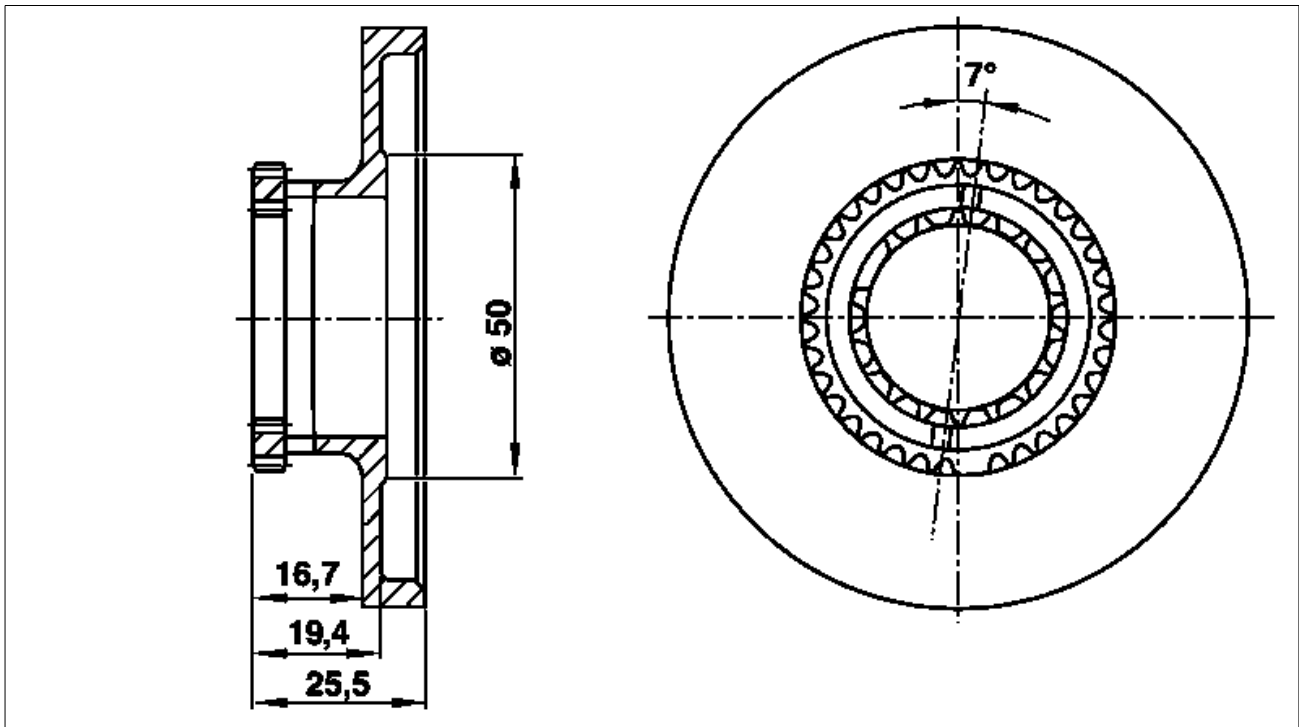
P05.20-0253-55

Stellkolben 104 051 06 37



P05.20-0254-55

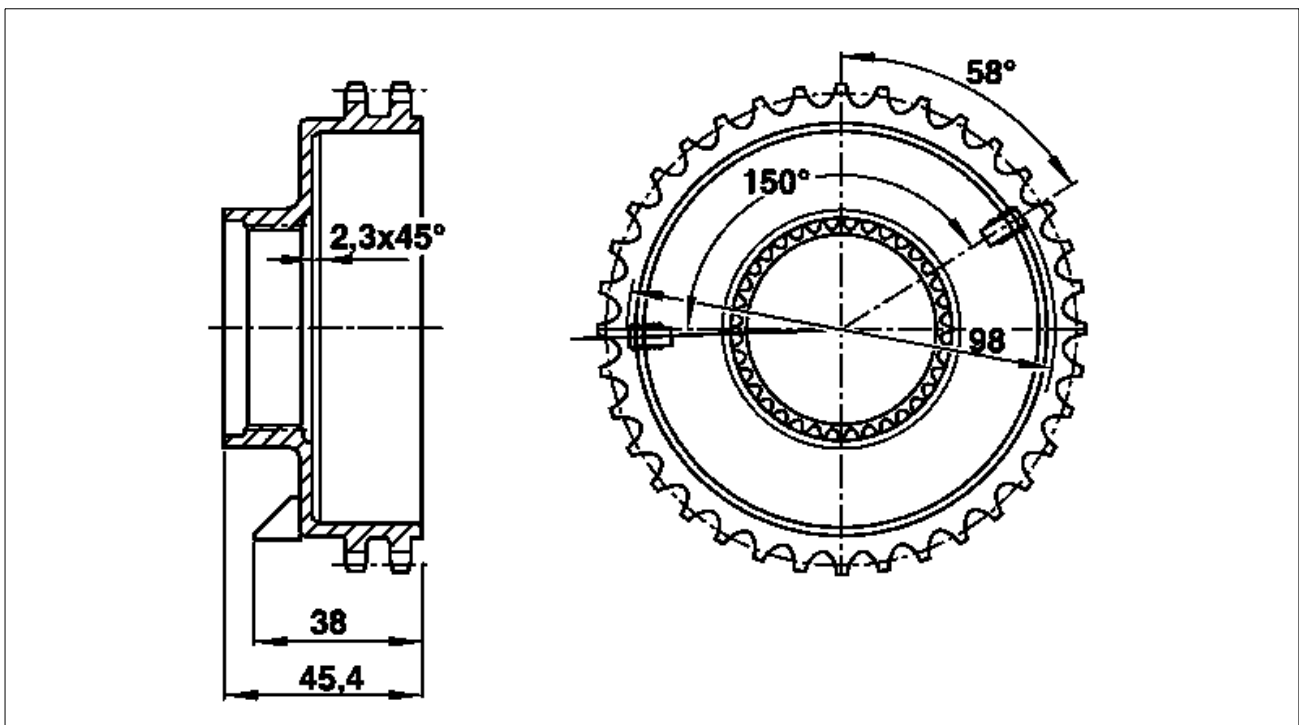
Stellkolben 104 051 09 37



P05.20-0255-55

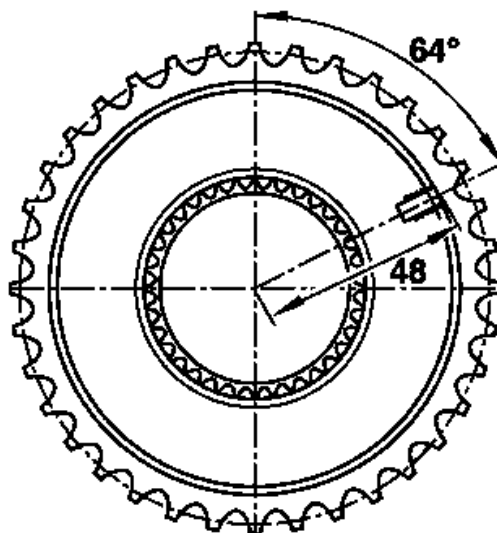
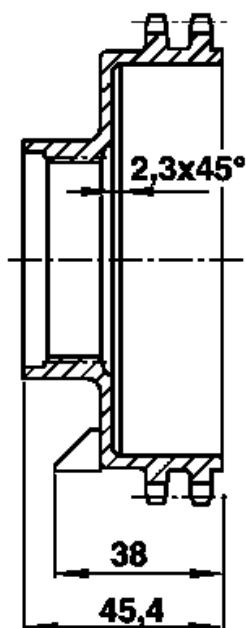
Stellkolben 104 051 07 37

Nockenwellenrad



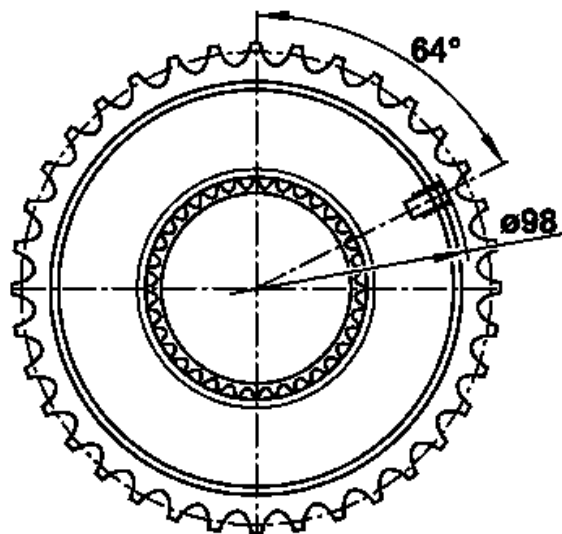
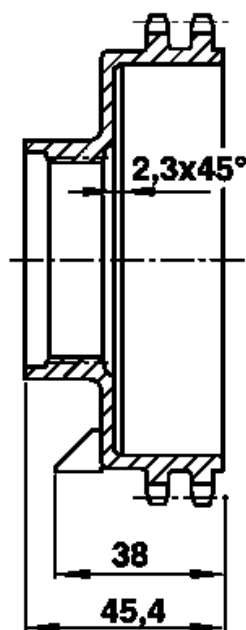
P05.20-0256-55

Nockenwellenrad 104 050 10 49



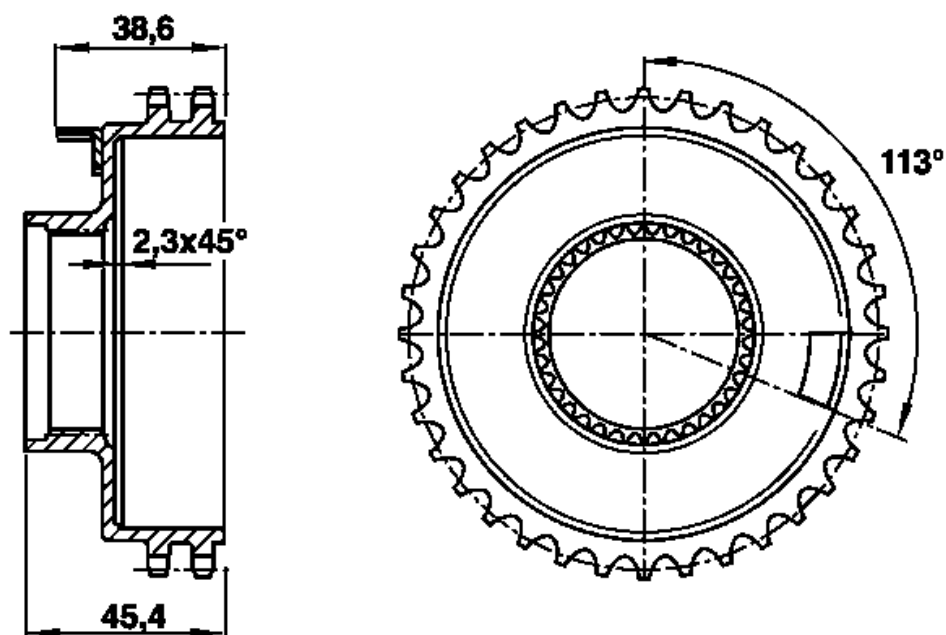
Nockenwellenrad 104 050 11 49

P05.20-0257-55



Nockenwellenrad 104 050 12 49

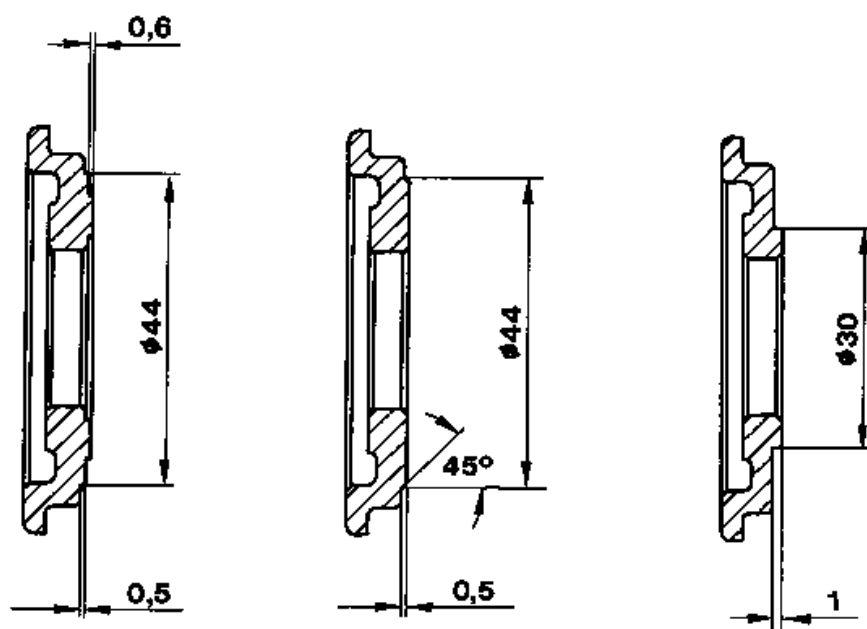
P05.20-0258-55



P05.20-0260-55

Nockenwellenrad 104 050 13 49

Deckel



P05-3414-55

104 051 39 03  
Motor 104.98

104 051 16 03  
Motor 104.94  
Motor 104.99  
Motor 120

119 051 47 03  
Motor 111  
Motor 119  
Motor 120

Motor 104 außer AMG- Motoren	104.941/942/ 943/944/991/ 992/994	104.980	104.990	103.943/944/ 945/991/994/ 995/996	012.458/12/22
Nockenwellen- Versteller	104 050 09 47	104 050 10 47	104 050 07 47	104 050 08 47 104 050 12 47	104 050 11 47
Stellkolben		104 051 06 37 104 051 09 37		104 051 07 37 104 050 09 37	104 051 09 37
Flanschwelle	104 051 03 84				104 051 04 84
Nocken- wellenrad	104 050 12 49	104 050 11 49	104 050 10 49	104 050 11 49 104 050 13 49	104 050 11 49
Deckel	104 051 16 03	104 051 39 03		104 051 16 03	
Geber an Nockenwellenrad			1		